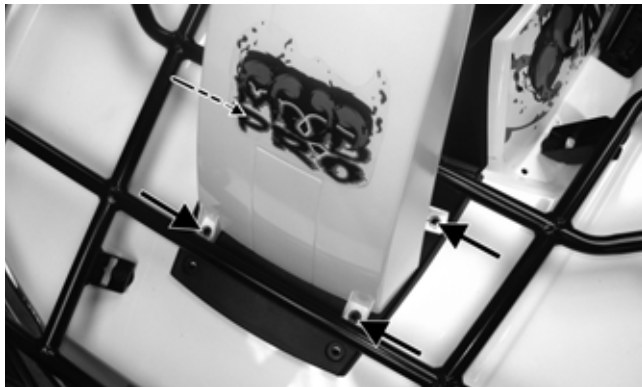


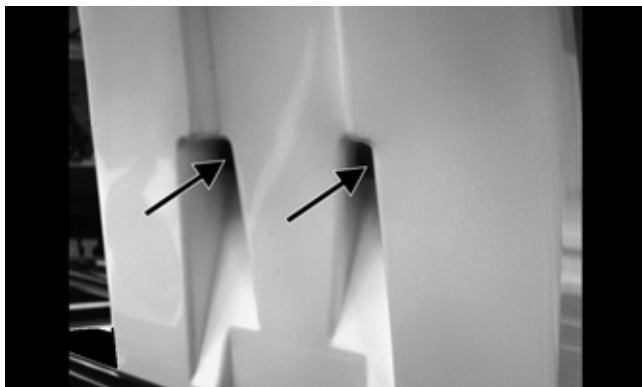


FI476

2. On the 700/1000, lift the front of the access panel; then slide the panel forward to disengage the two rear tabs.
3. On the 700/1000, move the panel rearward until free of the rack. On the 450/550/650, move the panel forward until free of the ATV.
4. On Mud Pro models, remove four cap screws securing the snorkel housing to the front inspection panel; then remove two cap screws from the rear of the snorkel housing.



MP006A



MP007A

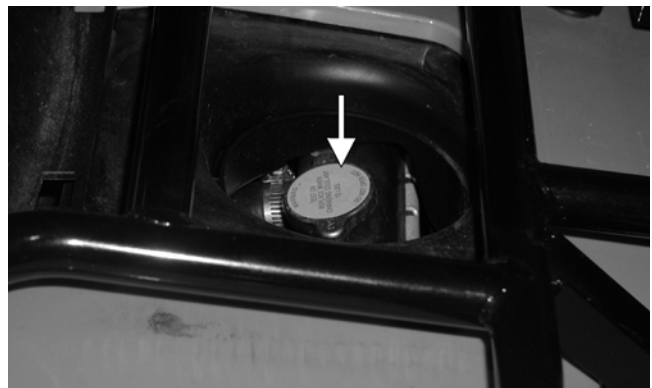
5. Separate the front of the snorkel housing from the rear; then remove the snorkel housing.



MP003

6. Remove two reinstallable rivets and remove the splash guard. The radiator cap can now be accessed in front of the snorkels.
7. Carefully rotate the radiator cap counterclockwise to release pressure; then remove the cap.

2



CF142A

8. Add coolant as necessary; then install the radiator cap and access panel or snorkel housing.

■ **NOTE:** Use a good quality, biodegradable glycol-based, automotive-type antifreeze.

### **⚠ WARNING**

Never check the coolant level when the engine is hot or the cooling system is under pressure.

### **CAUTION**

After operating the ATV for the initial 5-10 minutes, stop the engine, allow the engine to cool down, and check the coolant level. Add coolant as necessary.

## **Front Differential/Rear Drive Lubricant**

■ **NOTE:** On the 700 Mud Pro and 1000 models, the rear drive incorporates a shock-limiting clutch pack in the gear case input assembly that is designed to cushion driveline shock.