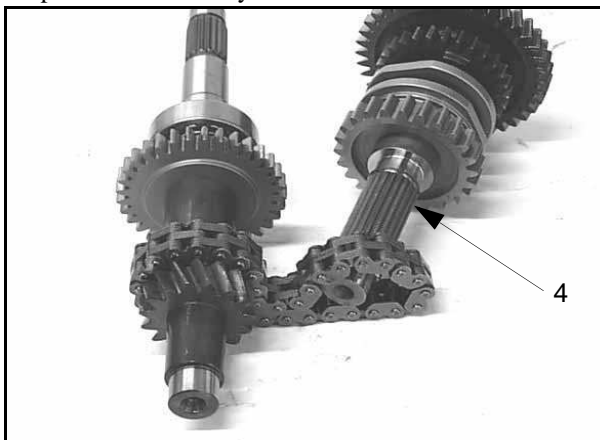
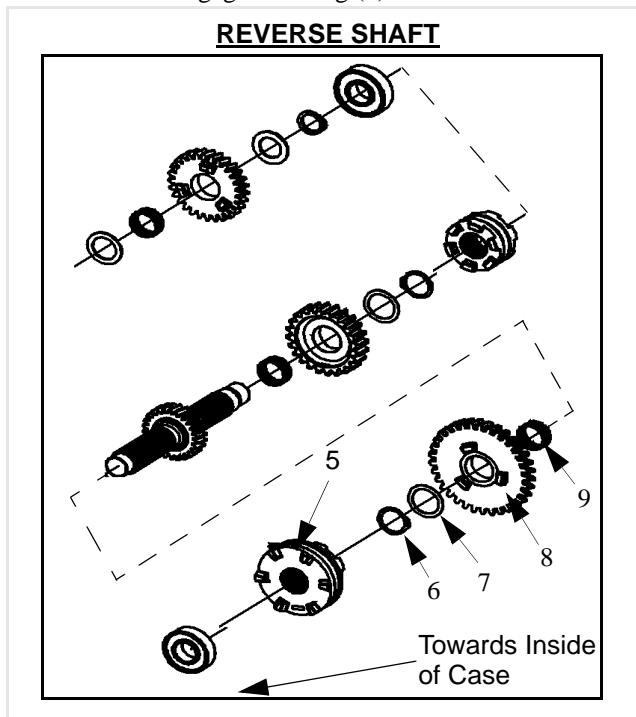


Sportsman X2 Transmission

22. The reverse shaft should slide out of the silent chain (4) to separate the assembly.

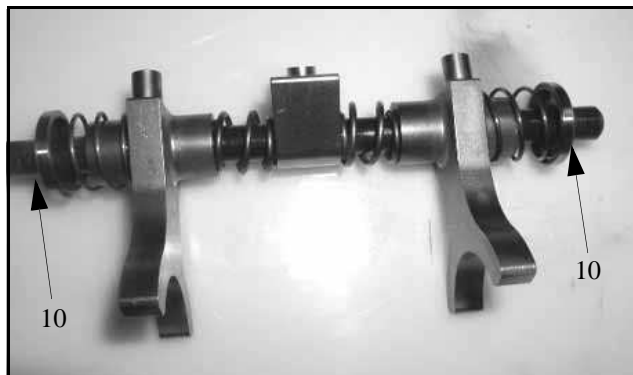


23. Remove the rest of the bearings from the shafts.
24. Remove the engagement dog (5) from the reverse shaft.



25. Remove the retaining ring (6) and then washer (7), gear (8), and split bearing (9) from the reverse shaft.

26. To disassemble the shift fork rail remove the snap ring (10) from the end of the shift rail on either side.

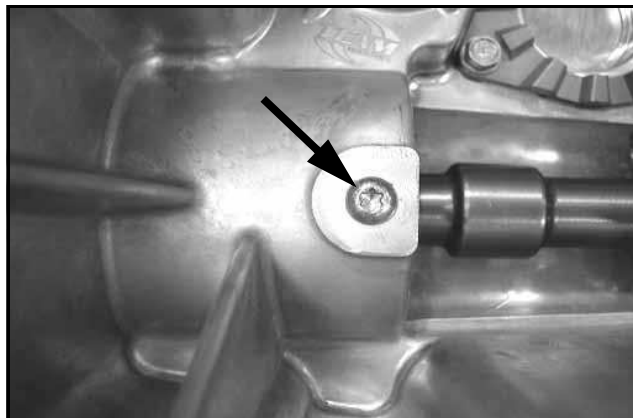


CAUTION

Use caution when disassembling the shift rail. The compressed springs on the shift rail may pop off causing eye or face injury.

Transmission Snorkel Shaft Removal

27. Remove the snorkel lock screw located inside the gearcase. Use a T27 hex socket or driver.



28. Mark the snorkel tube and case with a white pen or marker. This is used to ease reassembly of the gearcase.

